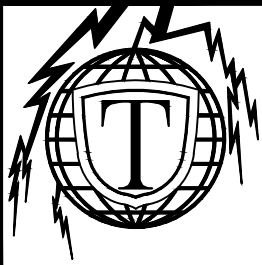
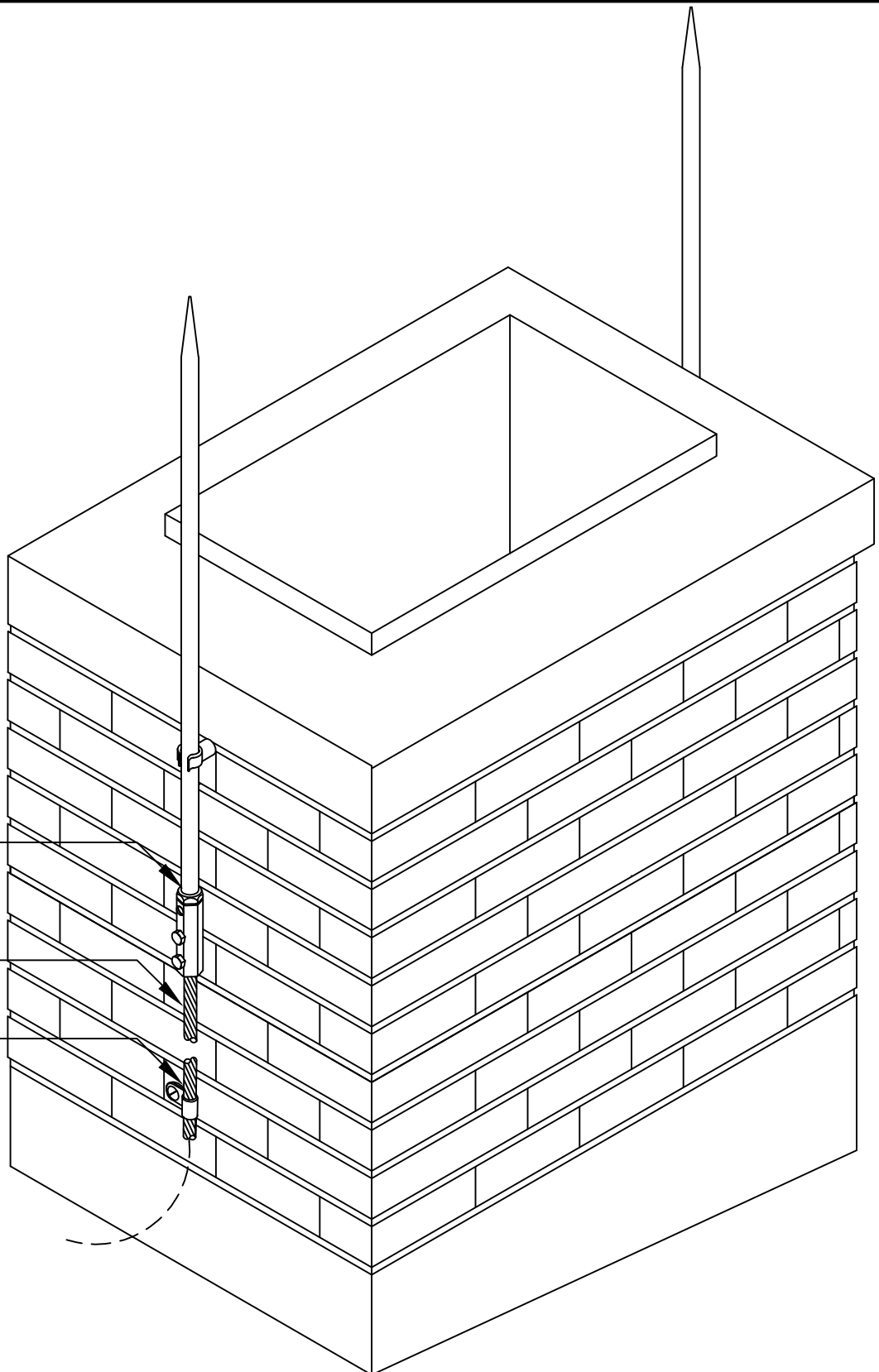


No.87; 1/2" X 5' Alum
CHIMNEY POINT ASSEMBLY
W/ POINT SUPPORT

No.
BARE Alum CONDUCTOR

No.A166; Alum LOOP
CABLE HOLDER
@ 3'-0" O/C



PROJECT:

THOMPSON LIGHTNING PROTECTION, INC.
901 SIBLEY HIGHWAY ST. PAUL, MN 55118-1792
MANUFACTURERS, CONTRACTORS & ENGINEERS

1-800-777-1230
(P): 651-455-7661
(F): 651-455-2545

REVISION		DATE
JOB NO:		FILE:
DR BY:	DATE: 8.24.11	
CH BY:	SHT	