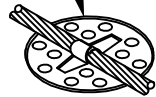


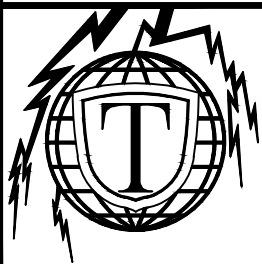
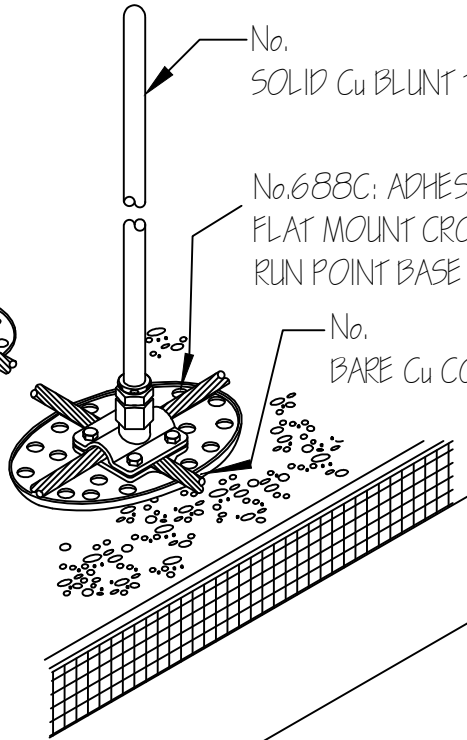
No.730: ADHESIVE
CABLE HOLDER
@ 3'-0" O/C



No.
SOLID Cu BLUNT TIP AIR TERMINAL

No.688C: ADHESIVE
FLAT MOUNT CROSS
RUN POINT BASE

No.
BARE Cu CONDUCTOR



PROJECT:

THOMPSON LIGHTNING PROTECTION, INC.
901 SIBLEY HIGHWAY ST. PAUL, MN 55118-1792
MANUFACTURERS, CONTRACTORS & ENGINEERS

1-800-777-1230
(P): 651-455-7661
(F): 651-455-2545

REVISION

DATE

JOB NO:

FILE:

DR BY:

DATE: 8.24.11

CH BY:

SHH