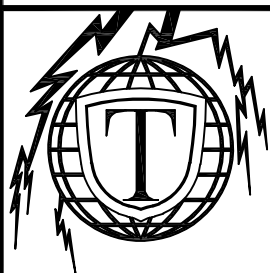
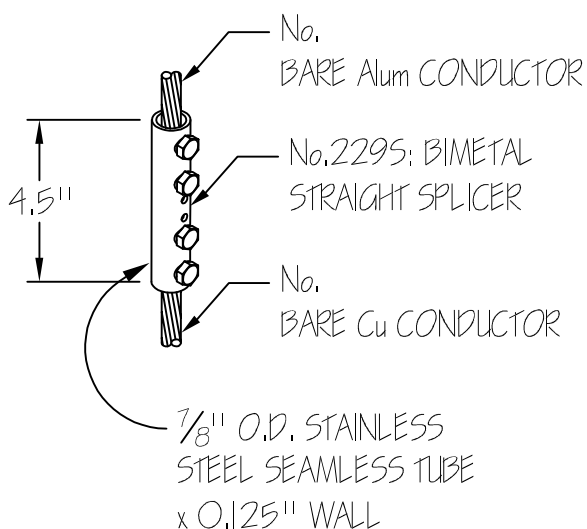


One piece heavy duty stainless steel splicer to join copper to aluminum cables. Cable size range up to No. 507/ A507. When used as a bimetal transition at downlead locations, this clamp must be 18" minimum above grade. Clamp has water tight isolator at center and can be used with either end up. Drain holes are provided at both sides to minimize potential corrosion. Stainless steel set screws have rounded ends that prevent cutting of cables when tightened.



CUTSHEET: No. 2295 BIMETAL  
TRANSITION SPLICER

THOMPSON LIGHTNING PROTECTION, INC.  
901 SIBLEY HIGHWAY ST. PAUL, MN 55118-1792  
MANUFACTURERS, CONTRACTORS & ENGINEERS

1-800-777-1230  
(P): 651-455-7661  
(F): 651-455-2545

REVISION

DATE

JOB NO:

FILE:

DR BY:

DATE:

CH BY:

SHT 1 OF 1